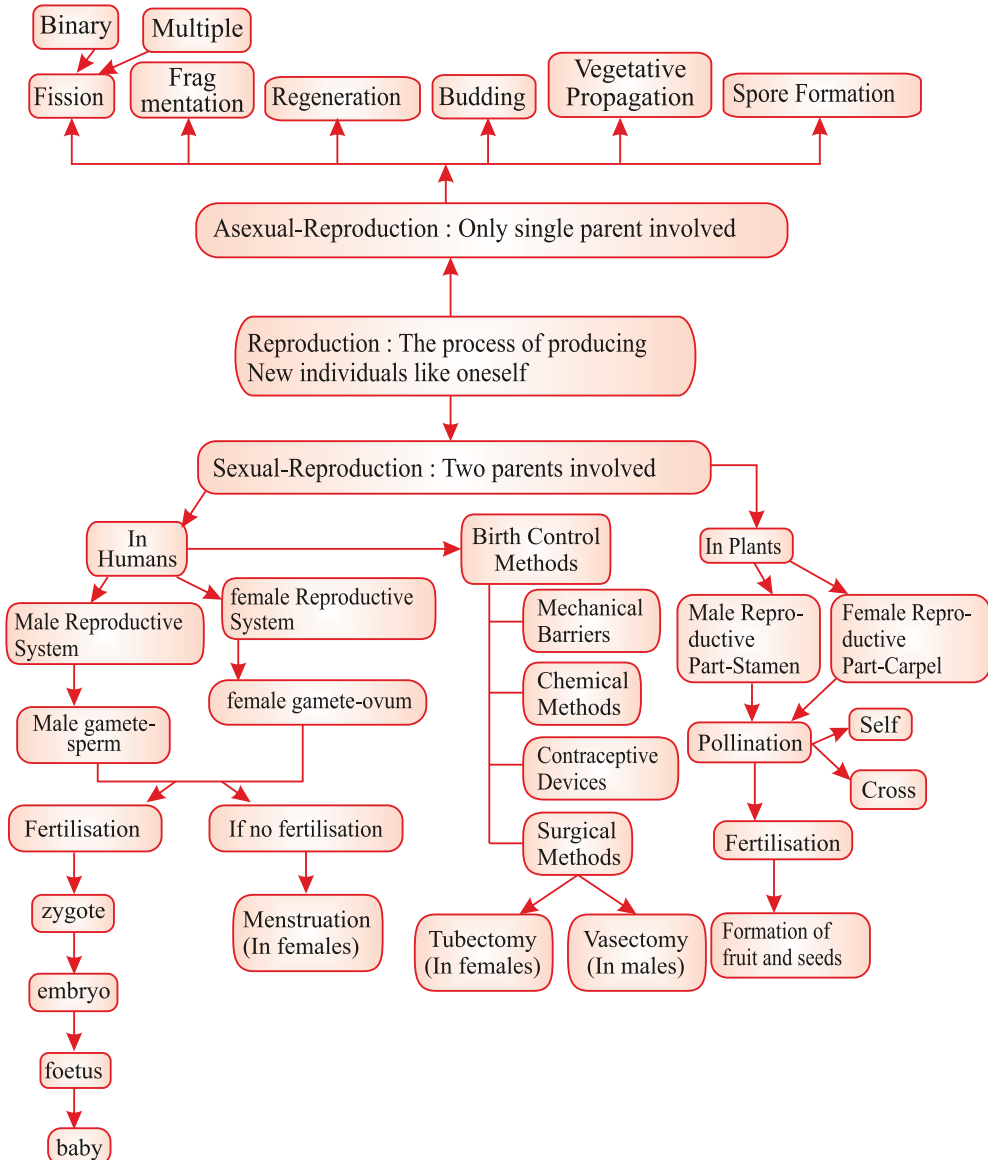


Chapter - 7

How do Organisms Reproduce



- Reproduction is the process by which living organisms produce new individuals similar to themselves. It ensures continuity of life on earth.
- Nucleus of the cell contains DNA (Deoxyribonucleic Acid) which is the hereditary material.
- DNA replicates and forms new cells causing variation. So, these new cells will be similar but may not be identical to original cell.
- Variations are useful for the survival of the individual and species over time as well as basis for evolution.

Types of Reproduction

(a) Asexual Reproduction

- A single individual gives rise to new individual.
- Gametes are not formed.
- New individual is identical to parent.
- It is extremely useful as a means of rapid multiplication.
- Adopted by lower organisms.

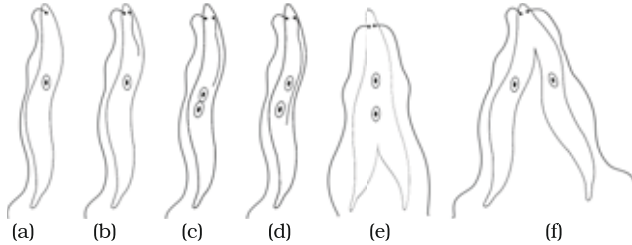
(b) Sexual Reproduction

- Two individuals i.e., one male and one female are needed to give rise to new individual.
- Gametes are formed.
- New individual is genetically similar but not identical to parents.
- It is useful to generate more variations in species.
- Adopted by higher organisms.

Modes of Asexual Reproduction

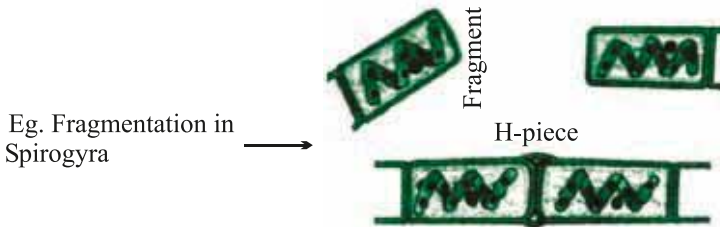
(i) **Fission** : The parent cell divides into daughter cells.

- **Binary fission** : 2 cells are formed. *E.g.*, Amoeba.
- **Multiple fission** : Many cells are formed. *E.g.*, Plasmodium.



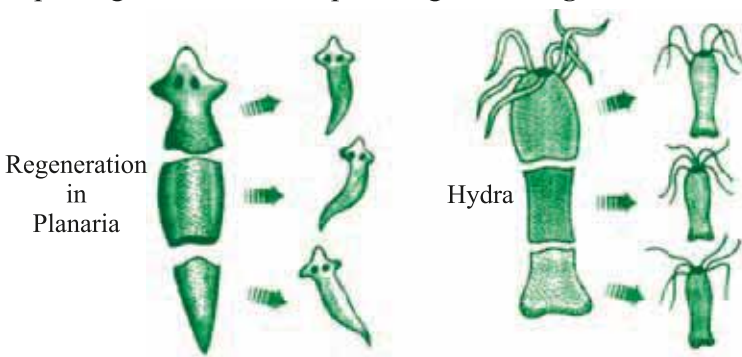
Binary fission in Leishmania

(ii) **Fragmentation** : The organism breaks-up into smaller pieces upon maturation, each piece develops into new individual. *E.g.*, Spirogyra.



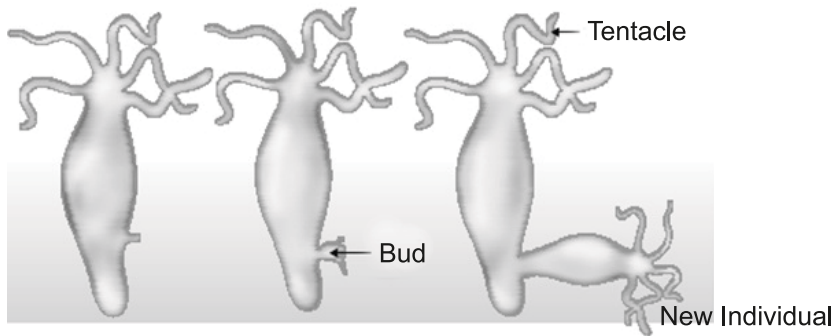
Fragmentation in Spirogyra

(iii) **Regeneration** : If organism is somehow cut or broken into many pieces, each piece grows into a complete organism. *E.g.*, Planaria, Hydra.



Regeneration in Planaria and Hydra

(iv) **Budding** : A bud is formed which develops into tiny individual. It detaches from parent body upon maturation and develops into new individual. *E.g.*, Hydra



Budding in Hydra

(v) **Vegetative Propagation** : In many plants, new plants develop from vegetative parts such as :

- By roots : *E.g.*, dahlias, sweet potato.
- By stem : *E.g.*, potato, ginger.
- By leaves : *E.g.*, bryophyllum (leaf notches bear buds which develop into plants).
- Artificial methods :

(a) Grafting : *E.g.*, Mango

(b) Cutting : *E.g.*, Rose

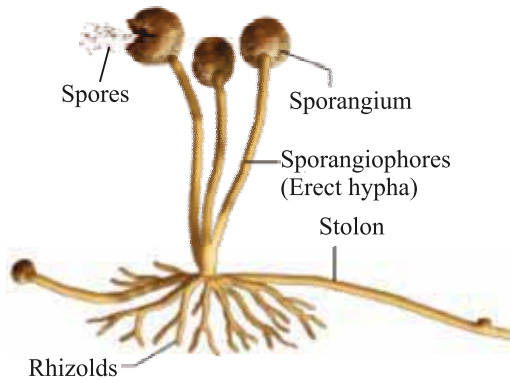
(c) Layering : *E.g.*, Jasmine

(d) **Tissue culture** : New plants are grown by using growing tip of a plant. These growing cells are kept in a culture medium leads to the formation of callus. Callus is then transferred to hormone medium which causes growth and differentiation. *E.g.*, ornamental plants, orchid.

Benefits of tissue culture :

- We can grow plants like banana, rose, jasmine etc. that have lost the capacity to produce seeds.
- New plants are genetically similar to parents.
- Helps in growing seedless fruits.

(vi) **Spore Formation** : Spores are small bulb like structures which are covered by thick walls. Under favourable conditions, they germinate and produce new organism.



Spore formation in Rhizopus

Sexual Reproduction

When reproduction takes place as a result of the fusion of male and female gametes is called sexual reproduction.

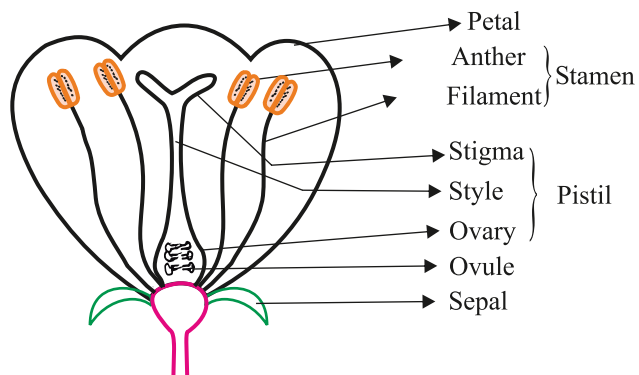
Fusion of gametes is called fertilization which results in variation.

Sexual Reproduction in Plants

- Flowers are the reproductive organs of plants.
- A typical flower consists of four main parts namely sepals, petals, stamen and pistil.

Types of Flowers

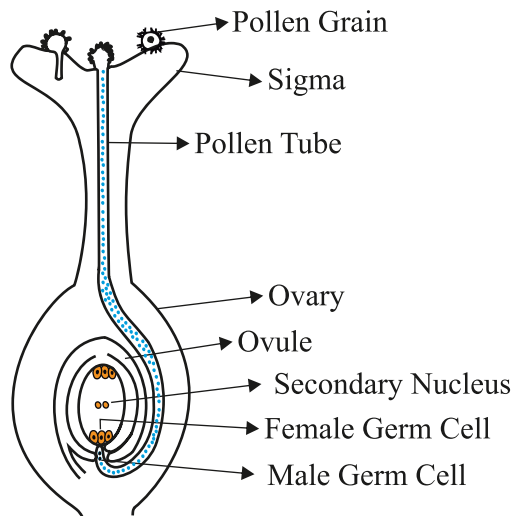
- **Bisexual flower** : Both male and female reproductive parts are present.
E.g., Hibiscus, mustard.
- **Unisexual flower** : Either male or female reproductive part is present.
E.g., Papaya, watermelon.



Longitudinal Section of Flower

Process of Seed Formation

- Pollen grains, produced in the anther, are transferred to the stigma of same flower (self pollination) or stigma of another flower (cross pollination) through agents like air, water or animals.
- Pollen grains germinate and form pollen tubes which pass through style to reach upto the ovules present in ovary.
- The fusion of male and female gametes is called fertilization. Zygote is produced inside the ovary.
- Zygote divides to form embryo. Ovule develops thick coat and changes into seed gradually.
- Ovary changes into fruit and other parts of flower fall off.

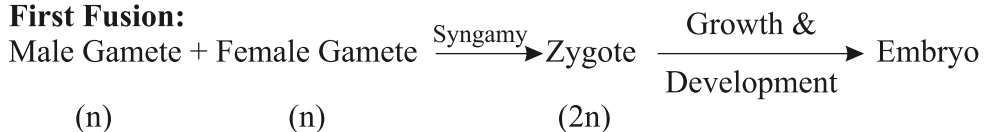


Germination of pollen on stigma

- The seed germinates to form a plant under suitable conditions such as air, moisture etc.

Double Fertilisation :

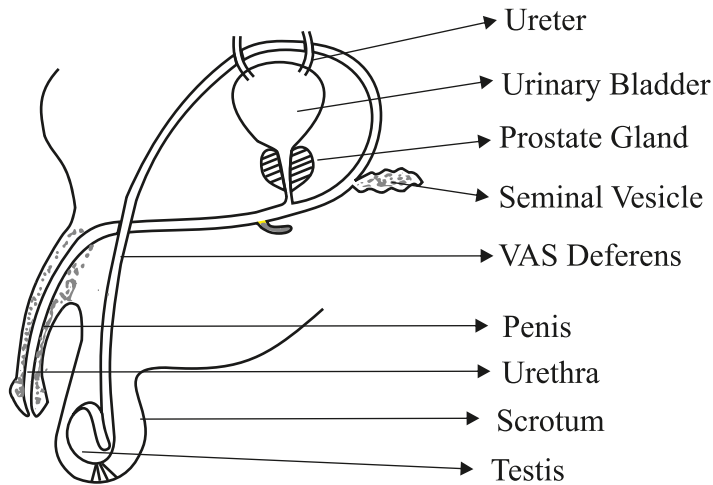
1) First Fusion:



Syngamy term is used for fusion of male and female gamete in plants.

(d) Associated glands : Seminal vesicles and prostate gland add their secretion to the sperms. This fluid provide nourishment to sperms and make their transport easy.

Sperm alongwith secretion of glands form semen.



Human – male reproductive system

Female Reproductive System

(a) Ovary : A pair of ovary is located in both sides of abdomen.

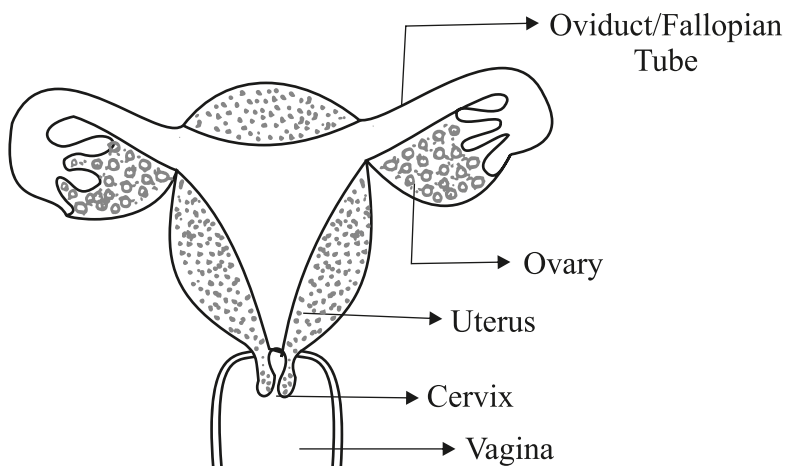
- Female germ cells *i.e.*, eggs are produced here.
- At the time of birth of a girl, thousands of immature eggs are present in the ovary.
- At the onset of puberty, some of these eggs start maturing.
- One egg is produced every month by one of the ovaries.

(b) Oviduct or Fallopian tube

- Receives the egg produced by the ovary and transfer it to the uterus.
- Fertilisation *i.e.*, fusion of gametes takes place here.

(c) Uterus : It is a bag-like structure where development of the baby takes place after implantation of embryo in its wall.

- Uterus opens into vagina through cervix.



Human – female reproductive system

When egg is fertilised :

- The fertilized egg called zygote is planted in uterus and develops into an embryo.
- The embryo gets nutrition from the mother's blood with the help of a special tissue called placenta. It provides a large surface area for the exchange of glucose, oxygen and waste material.
- The time period from fertilization upto the birth of the baby is called gestation period. It is about 9 months.

When egg is not fertilised :

- The uterus prepares itself every month to receive fertilized egg.
- The lining of the uterus becomes thick and spongy, required to support the embryo.
- When fertilisation had not taken place, this lining is not needed any longer.
- This lining breaks and comes out through vagina as blood and mucus. This cycle takes around 28 days every month and called menstruation.

Reproductive Health

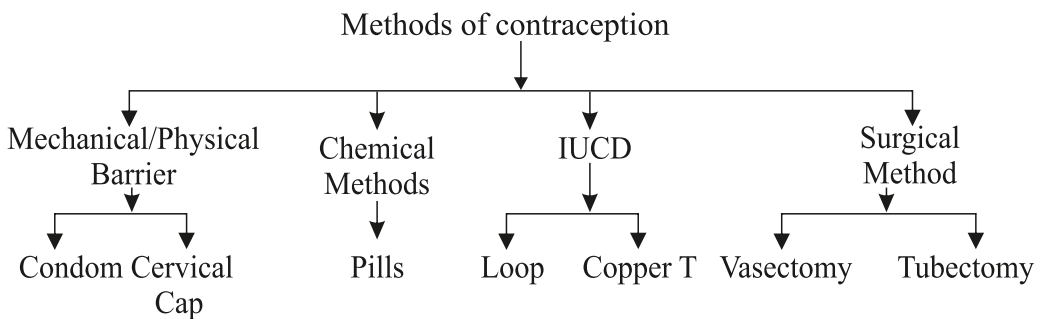
Reproductive health means a total well-being in all aspects of reproduction *i.e.*, physical, emotional, social and behavioural.

Sexually Transmitted Diseases (STDs)

- Many diseases can be sexually transmitted such as :
Bacterial : Gonorrhoea and syphilis
Viral : Warts and HIV-AIDS
- Use of condom prevents these infections to some extent.

Contraception

It is the avoidance of pregnancy, can be achieved by preventing the fertilisation of ova.



Methods of contraception

(a) Physical barrier

- To prevent union of egg and sperm.
- Use of condoms, cervical caps and diaphragm.

(b) Chemical methods

- Use of oral pills
- These change hormonal balance of body so that eggs are not released.
- May have side effects.

(c) Intrauterine contraceptive device (IUCD)

- Copper-T or loop is placed in uterus to prevent pregnancy.

(d) Surgical methods

- In males the vas deferens is blocked to prevent sperm transfer called vasectomy.
- In females, the fallopian tube is blocked to prevent egg transfer called tubectomy.

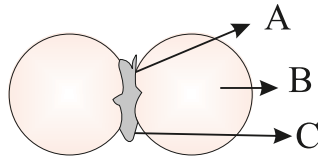
Female Foeticide

- The practice of killing a female child inside the womb is called female foeticide.
- For a healthy society, a balanced sex ratio is needed that can be achieved by educating people to avoid malpractices like female foeticide and prenatal sex determination.
- Prenatal sex determination is a legal offence in our country so as to maintain a balanced sex ratio.

MCQ /Very Short Answer Type Questions (1 Mark)

- Q.1 Gametes are formed in-
- a) Asexual Reproduction b) Sexual Reproduction
c) Vegetative Propagation d) Tissue Culture
- Q.2 Plasmodium reproduces by-
- a) Budding b) Binary Fission
c) Fragmentation d) Multiple fission
- Q.3 Which of the following is not a part of flower.
- a) Stem b) Carpel
c) Stamen d) Sepals
- Q. 4 Reproduction is essential for living organisms in order to
- a) Keep the individual organism alive
b) Fulfill their energy requirement
c) Maintain growth
d) Continue the species generation after generation
- Q.5 Which among the following diseases is not sexually transmitted.
- a) Syphilis b) HIV-AIDS
c) Cholera d) Gonorrhoea
- Q.6 The ability of a cell to divide into two cells during reproduction in Leishmania is called.
- a) Budding b) Reduction division
c) Binary fission d) Multiple fission
- Q.7 Characters transmitted from parents to off springs are present in
- a) Cytoplasm (b) Ribosome
c) Genes d) Golgi bodies

Q. 8 In figure given here identify the parts A, B and C sequentially.



- a) Cotyledon, Plumule, Radicle b) Plumule, Radicle, Cotyledon
c) Plumule, Cotyledon, Radicle d) Radicle, Cotyledon, Plumule

Q.9 During adolescence several changes occur in the human body. Mark one change associated with sexual maturation in boys.

- a) Loss of milk teeth b) Increase in height
c) Weight gain d) Cracking of voice

Q.10 Which of the following is an example of unisexual flower

- a) Papaya b) Hibiscus
c) Mustard d) Petunia

Answer

1. (b) 2. (d) 3. (a) 4. (d) 5. (c) 6. (c)
7. (c) 8. (c) 9. (d) 10. (a)

11. Read the Assertion and reason carefully and select the correct answer to these question from the codes (a), (b), (c) and (d) as given below :

- (a) Both A and R are true, and R is correct explanation of the Assertion (A).
(b) Both A and R are true, but R is not the correct explanation of the Assertion (A).
(c) A is true but R is false.
(d) A is false but R is true.

1. Assertion : Testes in males are located outside the abdominal cavity in scrotum

Reason: Sperm formation requires a lower temperature than the normal body temperature

2. Assertion : The lining of uterus thickens and prepares itself every month to receive a fertilised egg.

Reason: The unfertilized egg implants itself to uterus wall for nutrition

3. Assertion : Conventionally the motile germ cell is male gamete

Reason: The germ cell with stored food is female gamete

4. Assertion : Hibiscus is a unisexual flower

Reason: A bisexual flower contains both male and female parts

5. Assertion : The human population size is a cause for concern

Reason: An expanding population makes it easier to improve living conditions

Answer:

- | | |
|--------|--------|
| 1. (a) | 2. (c) |
| 3. (b) | 4. (d) |
| 5. (c) | |

Read the following and answer the questions

The female reproductive system is made up of internal and external organs. The function of the system is formation of new offsprings. In humans the female reproductive system is immature at birth and develops to maturity at puberty to be able to produce gametes.

1. Which organ of female reproductive system acts as site of implantation of foetus
- (a) Ovary
 - (b) uterus
 - (c) Cervix
 - (d) Fallopain tube
2. Which of the statements is incorrect
- (a) When a girl is born the ovaries contain thousand of immature eggs
 - (b) The site of fertilization is uterus
 - (c) The menstrual cycle takes place roughly month
 - (d) If the egg is not fertilised it is discarded out with the uterus lining
3. What is the life span of an unfertilized egg in human females
- (a) One week
 - (b) One month

- (c) One day
 - (d) 2–8 days
4. The disc like structure in uterine wall that provides foetus a surface for oxygen to pass is called
- (a) Cervix
 - (b) Ovary
 - (c) Placenta
 - (d) None of these
5. Identify the correct statement
- (a) The development of child inside mother's body takes approximately nine months
 - (b) The ovary releases two eggs per month
 - (c) The placenta contains villi on mother's side of the tissue
 - (d) The fertilized egg is called embryo and it divides to form zygote

Answer

1. (b) 2. (b) 3. (c)
4. (c) 5. (a)

VERY SHORT ANSWER TYPE QUESTIONS (1 Mark)

13. Name the two types of reproduction.
14. What type of reproduction takes place in Plasmodium ?
15. Define vegetative propagation.
16. Where is DNA present in a cell ?
17. Name the glands associated with male reproductive system.
18. What is menstruation ?
19. Name two contraceptive methods.
20. Where are the reproductive parts located in a plant ?

SHORT ANSWER TYPE QUESTIONS (3 Marks)

1. Write important functions of testosterone.
2. What is placenta ? Also write its functions. (CBSE-2018)
3. Why do we see different types of organisms around us ?
4. What is the importance of variation ? (CBSE-2018)

5. Why is vegetative propagation practised for growing some types of plants ?
6. Write names of male and female sex hormones.
7. Mention the parts of a flower.
8. Differentiate between bisexual and unisexual flowers.
9. What is tissue culture ?
10. Explain the process of fertilisation in flowering plants.
11. Name the different constituents of semen.
12. Draw a well-labelled diagram of male reproductive system.
13. What is pre-natal sex determination ? Why is it banned ?
14. Draw a labelled diagram of the longitudinal section of a flower.

LONG ANSWER TYPE QUESTIONS (5 Marks)

1. What are the different modes of asexual reproduction ?
2. Draw a labelled diagram of female reproductive system and write the function of its different parts. (CBSE-2018)
3. What is contraception ? Give different methods of contraception. (CBSE-2018)
4. What happens in human female :
 - (a) when egg is fertilised ?
 - (b) when egg is not fertilised ?
5. Trace and explain the steps involved in the formation of seed.
6. Define pollination. Explain the different types of pollination. List two agents of pollination? How does suitable pollination lead to fertilization? CBSE-2019

Hints to Long Answer Type Questions

1. Methods of asexual reproduction :
 - (a) Fission
 - (b) Fragmentation
 - (c) Regeneration
 - (d) Budding
 - (e) Vegetative propagation
 - (f) Spore formation
2. Labelled diagram of female reproductive system.

Functions :

Ovary : Production of eggs.

Oviduct : Site for fertilization.

Uterus : Place of development of embryo.

3. **Contraception** : Barrier for fertilisation.

- Physical barrier
- Chemical methods
- Surgical methods
- Intrauterine contraceptive device (IUCD)

4. (a) (i) Zygote is formed → Implanted in uterus

(ii) Onset of pregnancy

(b) Menstruation

5. Labelled diagram of germination of pollen grain on stigma of flower.

MCQs

1. Which of these statement is correct about reproduction?
 - (a) It keeps the individual organism alive
 - (b) It fulfills their energy requirement
 - (c) It maintains the growth
 - (d) It continues the species generation after generation
2. Which among the following is not the function of testes at puberty?

(a) Formation of germ cells	(b) Secretion of testosterone
(c) Development of placenta	(d) Secretion of estrogen
(a) (a) and (b)	(b) (b) and (c)
(c) (c) and (d)	(d) (d) and (a)
3. Length of pollen tube depends on the distance between
 - (a) Pollen grain and upper surface of stigma
 - (b) Pollen grain on upper surface of stigma and ovule
 - (c) Pollen grain in anther and upper surface of stigma
 - (d) Upper surface of stigma and lower part of style

4. A feature of reproduction that is common to Amoeba, Spirogyra and Yeast is that
- (a) They reproduce asexually
 - (b) They are all unicellular
 - (c) They reproduce only sexually
 - (d) They are all multicellular
5. Which of the following are examples of vegetative reproduction in plant?
- (a) Tomato, lady finger, onion and cauliflower
 - (b) Potato, ginger, onion and sugarcane
 - (c) Cauliflower, onion, potato and tomato
 - (d) Lady finger, onion, ginger and sugarcane
6. A student while observing an embryo of a gram seed listed various parts of the embryo as listed below. Testa, Micropyle, Cotyledon, Tegmen, Plumule, Radicle
- On examining the list the teacher commented that only 3 parts are correct. Select these three correct parts:
- (a) Cotyledon, Testa, Plumule
 - (b) Cotyledon, Plumule, Radicle
 - (c) Cotyledon, Tegmen, Radicle
 - (d) Cotyledon, Micropyle, Plumule
7. The correct sequence of reproductive stages in flowering plant is
- (a) Gametes, Zygote, embryo, seedling
 - (b) Zygote, gametes, embryo, seedling
 - (c) Seeding, embryo, zygote, gametes
 - (d) Gametes, embryo, zygote, seeding

8. Organisms formed by asexual method of reproduction have greater similarity among themselves because
- (1) Asexual reproduction involves only one parent
 - (2) Asexual reproduction does not involve gametes
 - (3) Asexual reproduction occurs before sexual reproduction
 - (4) Asexual reproduction occurs after sexual reproduction
- (a) (1) and (2) (b) (1) and (3)
(c) (2) and (4) (d) (3) and (4)
9. The number of chromosomes in parents and offspring of a particular species remains constant due to
- (a) Doubling of chromosomes after zygote formation
 - (b) Halving of chromosomes during gametes formation
 - (c) Doubling of chromosomes after gametes formation
 - (d) Halving of chromosomes after gamete formation
10. In the list of organisms given below, those that reproduce by the asexual method are:
- | | |
|-------------------|--------------------------|
| (i) Banana | (ii) Dog |
| (iii) Yeast | (iv) Amoeba |
| (a) (ii) and (iv) | (b) (i), (iii) and (iv) |
| (c) (i) and (iv) | (d) (ii), (iii) and (iv) |

Answer

- | | |
|---------|----------|
| (1) (d) | (6) (b) |
| (2) (c) | (7) (a) |
| (3) (b) | (8) (a) |
| (4) (a) | (9) (b) |
| (5) (b) | (10) (b) |